



Peace of Mind Automotive Inspection Report.

Joe Trejo Jr.
210-557-0686

Complete

Score	75%	Flagged items	1	Actions	0
Customer name					Greg
Date / Time					Aug 3rd
Payment method					Invoice
Inspection cost					249
Vehicle Year / Make / Model / Color					1979 Cadillac deville coupe
VIN					6d47s9c386862
license plate					Dealer temp
Mileage					14700 on odo
Color					Seafoam green

Flagged items

1 flagged

Interior Electrical Functions

Air conditioning below 60*

No

Ac compressor not working / engaging

Interior Electrical Functions		1 flagged, 50%
Horn function		Function correct
Interior lighting function		Function correct
Power lock function		Function correct
Power window function		Function correct
Power seat function		Issue present
Power seat not functioning, can hear motor engage		
Power Doors / lift gate function		N/A
Air conditioning below 60*		No
Ac compressor not working / engaging		
Heater above 90*		Yes
Climate controls function		Function correct
Radio / display screen function		Function correct
Speakers performing correctly		Function correct
GPS function		N/A
Satellite radio function		N/A
12V power supply function		Function correct
Wireless charging function		N/A
Cooled seat function		N/A
Heated seat function		N/A
Remote entry function		Function correct

ADDITIONAL NOTES

Vehicle interior electrical function correct across-the-board aside from the air conditioning not Cooling.

Interior Condition	
Seat belt function	Function correct
Front seat condition	Normal wear
Rear seat condition	Normal wear
Carpeting condition	Normal wear
Headliner condition	Normal wear
Door panel condition	Normal wear
Dashboard condition	Normal wear
Headliner condition	Normal wear
Center console condition	Normal wear
Glove compartment condition	Normal wear
Sun visor condition	Normal wear
Trunk / Cargo area condition	Normal wear
Trim pieces condition	N/A

ADDITIONAL NOTES

Normal wear to interior for age and mileage, no water damage to carpet or carpet insulation, no rust on the bottom side of the dash, no evidence of flood damage present. No evidence of vehicle being smoked inside. No severe damaged or missing panels. See interior photos for evidence of wear and tear present



Photo 1

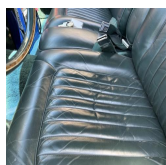


Photo 2

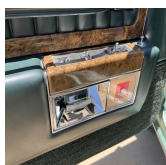


Photo 3



Photo 4

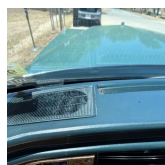


Photo 5

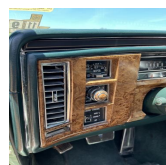


Photo 6

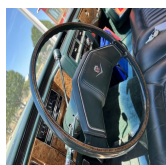


Photo 7

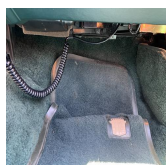


Photo 8

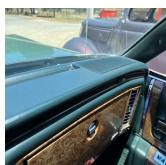


Photo 9



Photo 10



Photo 11

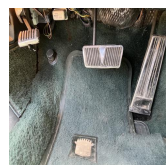


Photo 12



Photo 13



Photo 14



Photo 15



Photo 16



Photo 17



Photo 18



Photo 19



Photo 20

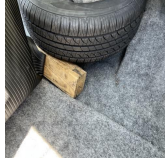


Photo 21



Photo 22



Photo 23



Photo 24



Photo 25



Photo 26



Photo 27

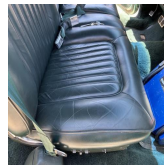


Photo 28



Photo 29



Photo 30



Photo 31



Photo 32



Photo 33



Photo 34

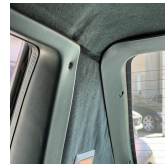


Photo 35

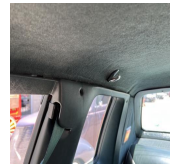


Photo 36



Photo 37



Photo 38



Photo 39



Photo 40

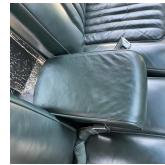


Photo 41



Photo 42

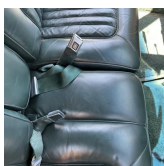


Photo 43



Photo 44



Photo 45



Photo 46

Exterior Body / Structural Condition

Paint depth on metal body panels



Photo 47

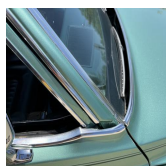


Photo 48

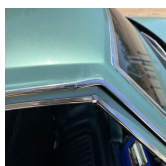


Photo 49



Photo 50



Photo 51



Photo 52



Photo 53



Photo 54



Photo 55



Photo 56



Photo 57



Photo 58



Photo 59



Photo 60



Photo 61



Photo 62

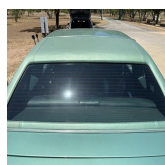


Photo 63

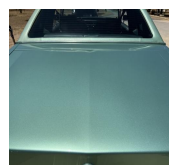


Photo 64



Photo 65



Photo 66

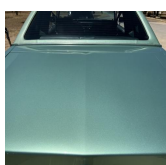


Photo 67

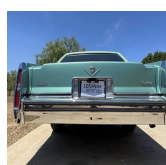


Photo 68



Photo 69

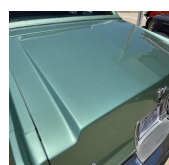


Photo 70

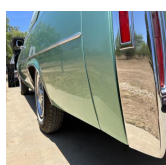


Photo 71



Photo 72

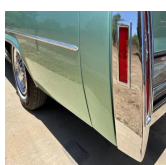


Photo 73



Photo 74



Photo 75



Photo 76



Photo 77



Photo 78

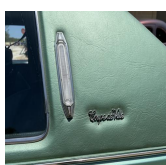


Photo 79



Photo 80



Photo 81

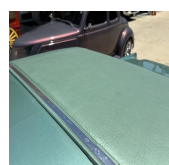


Photo 82

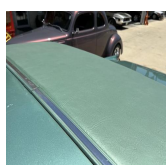


Photo 83

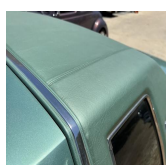


Photo 84

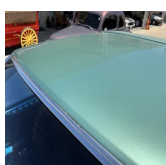


Photo 85

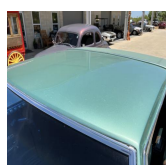


Photo 86



Photo 87

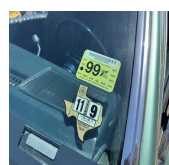


Photo 88



Photo 89



Photo 90



Photo 91



Photo 92



Photo 93



Photo 94



Photo 95



Photo 96



Photo 97



Photo 98



Photo 99

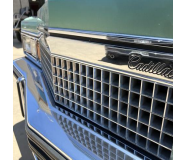


Photo 100



Photo 101



Photo 102



Photo 103



Photo 104



Photo 105



Photo 106

Front bumper condition	Normal wear
Rear bumper condition	Normal wear
Hood panel condition	Normal wear
Driver side fender condition	Normal wear
Passenger side fender condition	Normal wear
Roof panel condition	Normal wear
Front driver side door Condition	Normal wear
Rear driver side door condition	N/A
Front passenger side door condition	Normal wear
Rear passenger side door condition	N/A
Driver side quarter panel condition	Normal wear
Passenger side quarter panel condition	Normal wear
Trunk panel condition	Normal wear
Truck Bed condition	N/A
Tail gate condition	N/A

Chassis / Frame condition	Normal wear
Frame rail condition	Normal wear
Subframe condition	Normal wear
Engine cradle condition	Normal wear
Skid / Dust cover condition	Normal wear
Collapse beam condition	Normal wear
Window trim condition	Normal wear
Weather stripping condition	Normal wear
Front windshield condition	Normal wear
Other window glass condition	Normal wear
Wheel / Hubcap condition	Normal wear

ADDITIONAL NOTES

No rust or corrosion to frame/chassis vehicle has lived in a healthy climate for the duration of its usage.

Tire condition

Front driver side tire

75-100% remaining



Photo 107

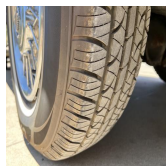


Photo 108

Front passenger side tire

75-100% remaining



Photo 109

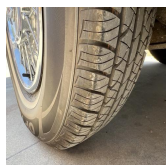


Photo 110

Rear driver side tire

75-100% remaining

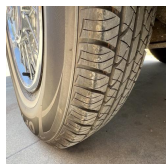


Photo 111



Photo 112

Rear passenger side tire

75-100% remaining



Photo 113

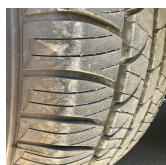


Photo 114

Spare tire and equipment

Spare and tools present

Battery / charging system

Battery date Na

Standing voltage 12.8

Loaded voltage 14.0

Engine Testing / Condition

100%

Internal engine inspection w/ borescope camera

Engine clean internally, no gunk or sludge present. Proper signs of maintenance present. All external engine accessories in good working order. External drive belt and healthy condition. No external oil leaks or seepage from engine. Coolant make sure correct and coolant system functionality healthy.



Photo 115



Photo 116

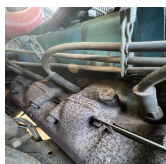


Photo 117

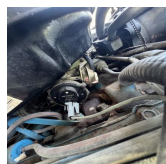


Photo 118



Photo 119

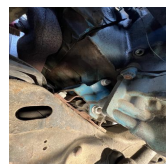


Photo 120

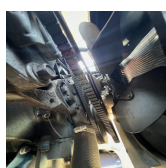


Photo 121

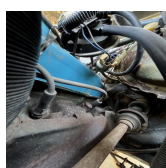


Photo 122

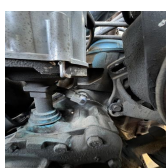


Photo 123

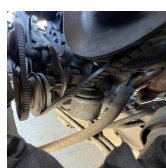


Photo 124

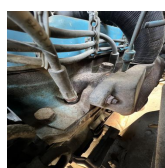


Photo 125

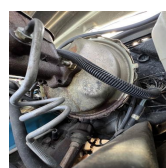


Photo 126

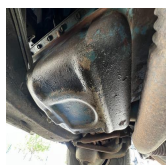


Photo 127

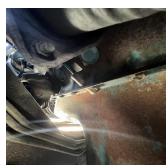


Photo 128

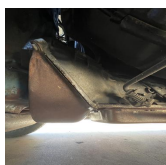












Photo 129

Engine block test	Pass
Coolant mixture test	Pass
Air filter condition	Normal wear
Engine oil condition	Normal wear
Engine oil level	Healthy
Engine oil leaks	None
Coolant level	Healthy
Coolant hoses	Healthy
Radiator condition / function	Healthy
Engine operating temperature	Healthy
Cooling fan function	Healthy

Drive belt condition	Healthy
Abnormal engine knock	None
Abnormal valve train rattle	None
Abnormal bearing noises	None
Engine gunk / sludge	None
Fuel tank	Healthy
Fuel injectors / lines	Healthy
Valve cover gaskets	Healthy
Intake manifold gasket	Healthy
Cylinder head gasket	Healthy
Oil pan gasket	Healthy
Timing cover gasket	Healthy
Rear main seal	Healthy
Timing belt / components	Healthy
Exhaust manifold	Healthy
External engine accessories	Healthy

Transmission / Differentials	
Transmission fluid level	Healthy
Transmission fluid condition	Healthy
Transmission fluid leaks	None
<div>       </div> <div> Photo 130 Photo 131 Photo 132 Photo 133 Photo 134 Photo 135 </div>	
Transmission cooler / lines	Healthy
Front differential condition	N/A
Center differential condition	N/A
Rear differential condition	Healthy
Residue noticed around rear differential cover, cover may need to be resealed in the future	
<div>     </div> <div> Photo 136 Photo 137 Photo 138 Photo 139 </div>	
Differential leaks	None
4x4 function / engagement	N/A
Clutch engagement	N/A
Gear engagement	Healthy
Shift transitions	Healthy
Drive shaft condition	Healthy

Suspension condition

Front shocks / struts

Healthy



Photo 140

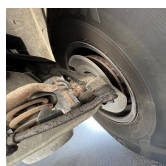


Photo 141

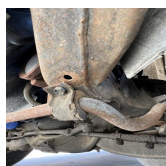


Photo 142

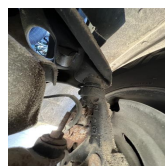


Photo 143

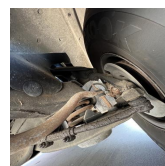


Photo 144

Rear shocks / struts

Healthy

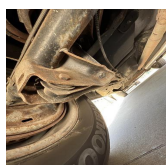


Photo 145

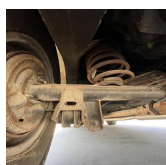


Photo 146

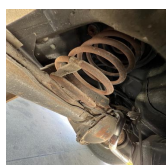


Photo 147

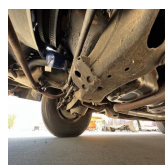


Photo 148

Control arms upper

Healthy

Control arms lower

Healthy

Ball joints

Healthy

Bushings

Healthy

Torsion bars

Healthy

Coilover function

N/A

Air ride function

N/A

Airbag condition

N/A

Abnormal rust / corrosion to metals

None

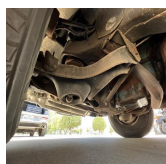


Photo 149

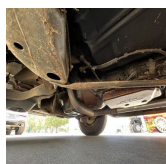


Photo 150

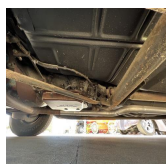


Photo 151

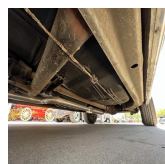


Photo 152

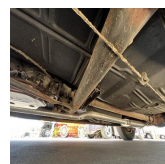


Photo 153

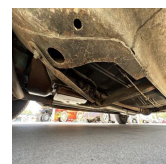


Photo 154

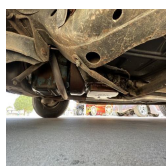


Photo 155

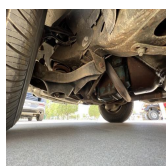


Photo 156

Deterioration of rubbers

None

Braking system condition	
Brake fluid condition	Healthy
Brake fluid level	Healthy
Brake fluid leaks	None
Moisture content in brake fluid	None
Brake lines	Healthy
Brake calipers front	Healthy
Brake calipers rear	Healthy
Brake drums rear	Healthy
Brake rotors front	Healthy
Brake rotors rear	N/A
Front brake pad life remaining	50-75% remaining
Rear brake pad life remaining	
E-brake function	Healthy

Steering system condition	
Steering wheel	Healthy
Steering column	Healthy
Steering knuckle / shaft	Healthy
Steering box	Healthy
Rack and pinion condition	N/A
Inner tie rods	Healthy
outer tie rods	Healthy
Rack boots	Healthy
Power steering pump	Healthy
power steering lines	Healthy
Power steering leaks	None
Power steering fluid level	Healthy
Electric steering motor	N/A
Abnormal play / slack in steering	None
Steering alignment on road	Healthy

Computer diagnostic scan	
Engine control module	N/A
Transmission control module	N/A
Anti lock brake (ABS) module	N/A
SRS module	N/A
hybrid control module	N/A
Suspension control module	N/A

Vehicle road test

Vehicle road test comments / concerns

Vehicle function correct out on the road, no drivability issues present.

Value of vehicle / Diminished value due to repairs or current damage

No diminished value due to no structural damage present nor any structural damage repair work done.

Appendix



Photo 1



Photo 2



Photo 3



Photo 4



Photo 5



Photo 6

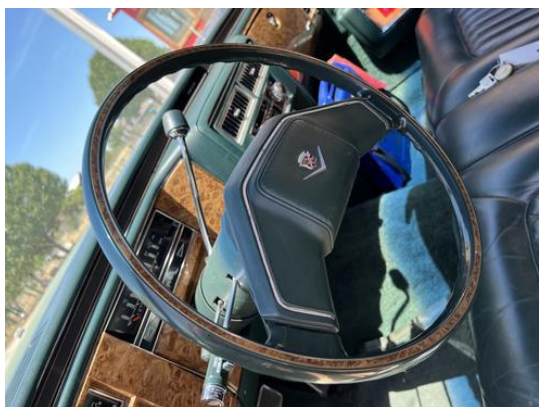


Photo 7



Photo 8



Photo 9



Photo 10



Photo 11

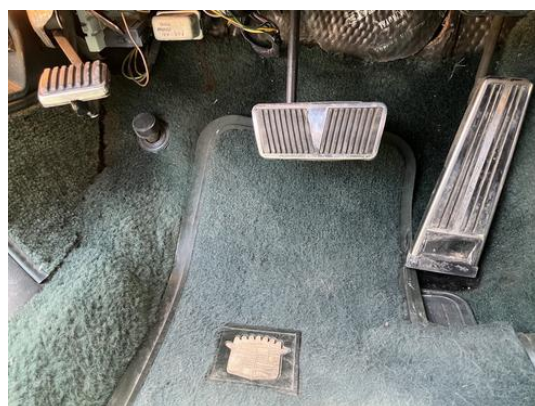


Photo 12



Photo 13



Photo 14



Photo 15



Photo 16



Photo 17



Photo 18



Photo 19



Photo 20



Photo 21



Photo 22



Photo 23



Photo 24



Photo 25



Photo 26



Photo 27



Photo 28



Photo 29



Photo 30



Photo 31



Photo 32



Photo 33



Photo 34



Photo 35



Photo 36



Photo 37



Photo 38



Photo 39



Photo 40



Photo 41



Photo 42



Photo 43



Photo 44



Photo 45



Photo 46



Photo 47



Photo 48



Photo 49



Photo 50



Photo 51



Photo 52



Photo 53



Photo 54



Photo 55



Photo 56



Photo 57



Photo 58



Photo 59



Photo 60



Photo 61



Photo 62



Photo 63



Photo 64



Photo 65



Photo 66



Photo 67



Photo 68



Photo 69



Photo 70



Photo 71



Photo 72



Photo 73



Photo 74



Photo 75



Photo 76



Photo 77



Photo 78



Photo 79



Photo 80



Photo 81



Photo 82



Photo 83



Photo 84



Photo 85



Photo 86



Photo 87



Photo 88



Photo 89



Photo 90



Photo 91



Photo 92



Photo 93



Photo 94



Photo 95



Photo 96



Photo 97



Photo 98



Photo 99



Photo 100



Photo 101



Photo 102



Photo 103



Photo 104



Photo 105



Photo 106



Photo 107



Photo 108



Photo 109



Photo 110



Photo 111



Photo 112



Photo 113



Photo 114



Photo 115



Photo 116



Photo 117



Photo 118



Photo 119

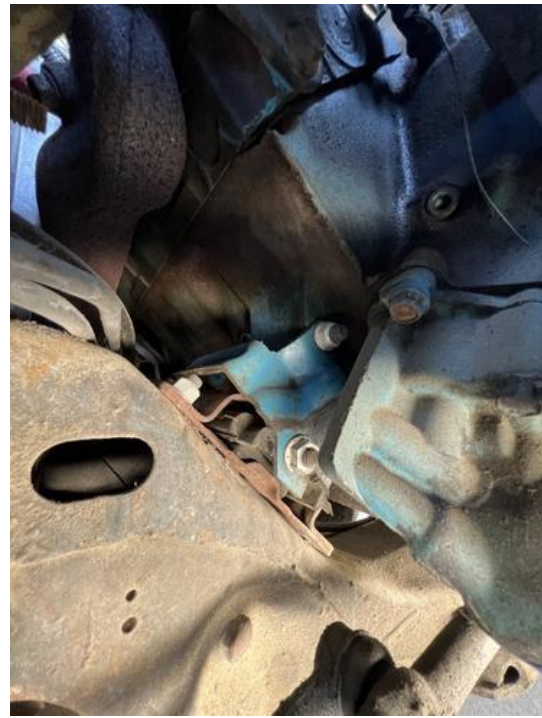


Photo 120



Photo 121

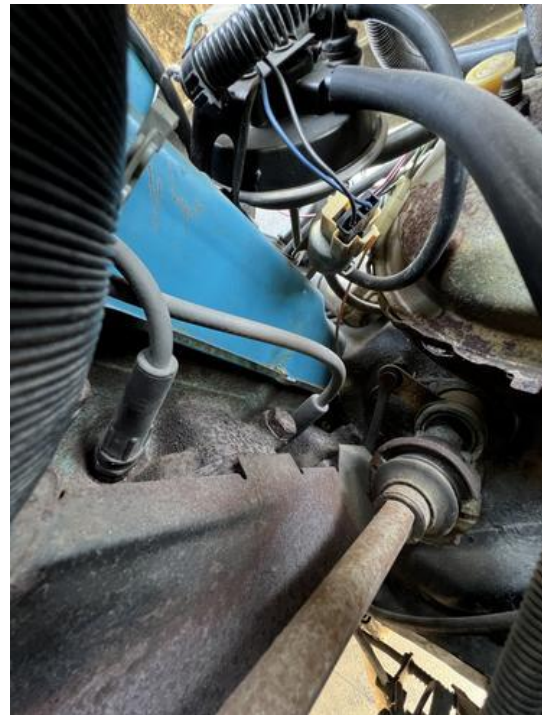


Photo 122



Photo 123



Photo 124



Photo 125



Photo 126



Photo 127



Photo 128



Photo 129



Photo 130



Photo 131



Photo 132



Photo 133



Photo 134



Photo 135



Photo 136



Photo 137



Photo 138



Photo 139



Photo 140



Photo 141



Photo 142



Photo 143



Photo 144



Photo 145



Photo 146



Photo 147



Photo 148



Photo 149

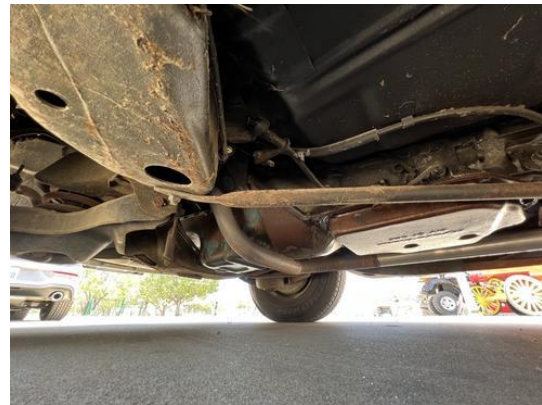


Photo 150



Photo 151

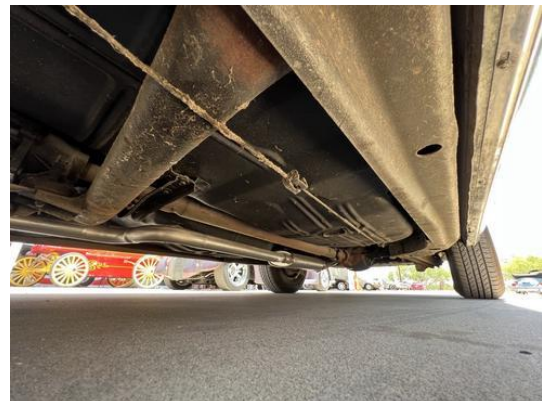


Photo 152



Photo 153

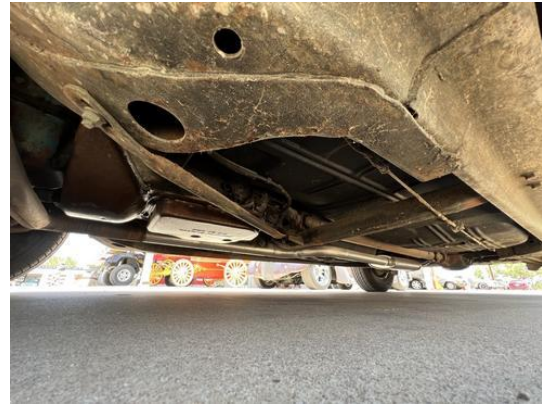


Photo 154



Photo 155



Photo 156