



## Peace of Mind Automotive Inspection Report.

**Joe Trejo Jr.**  
**210-557-0686**

Complete

Score	<b>100%</b>	Flagged items	<b>0</b>	Actions	<b>0</b>
<b>Site conducted</b>					Unanswered
<b>Customer name</b>					Jim
<b>Date / Time</b>					Sep 17th
<b>Payment method</b>					Invoice
<b>Inspection cost</b>					169
<b>Vehicle Year / Make / Model / Color</b>					2013 Jeep Wrangler red
<b>VIN</b>					72473 last 5
<b>license plate</b>					Dealer
<b>Mileage</b>					98343
<b>Color</b>					Red

Interior Electrical Functions	100%
<b>Horn function</b>	Function correct
<b>Interior lighting function</b>	Function correct
<b>Power lock function</b>	N/A
<b>Power window function</b>	N/A
<b>Power seat function</b>	N/A
<b>Power Doors / lift gate function</b>	N/A
<b>Air conditioning below 60*</b>	Yes
<b>Heater above 90*</b>	Yes
<b>Climate controls function</b>	Function correct
<b>Radio / display screen function</b>	Function correct
<b>Speakers performing correctly</b>	Function correct
<b>GPS function</b>	N/A
<b>Satellite radio function</b>	N/A
<b>12V power supply function</b>	Function correct
<b>Wireless charging function</b>	N/A
<b>Cooled seat function</b>	N/A
<b>Heated seat function</b>	N/A
<b>Remote entry function</b>	N/A

**ADDITIONAL NOTES**

Vehicle interior electrical function correct across-the-board

Interior Condition	
Seat belt function	Function correct
Front seat condition	Normal wear
Rear seat condition	Normal wear
Carpeting condition	Normal wear
Headliner condition	Normal wear
Door panel condition	Normal wear
Dashboard condition	Normal wear
Headliner condition	Normal wear
Center console condition	Normal wear
Glove compartment condition	Normal wear
Sun visor condition	Abnormal wear

Call driver and passenger sunvisors are missing the plastic grommet that locks them into place



Photo 1



Photo 2

Trunk / Cargo area condition	N/A
Trim pieces condition	Normal wear

### ADDITIONAL NOTES

Normal wear to interior for age and mileage, no water damage to carpet or carpet insulation, no rust on the bottom side of the dash. No evidence of flood damage present. No evidence of vehicle being smoked inside. Overall the vehicle interior is well-kept for the age and mileage, see all interior photos for evidence of wear and tear present.



Photo 3

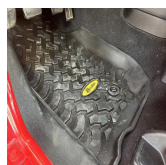


Photo 4

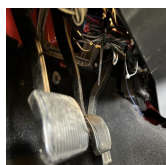


Photo 5



Photo 6

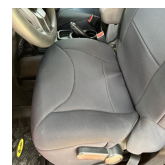


Photo 7



Photo 8

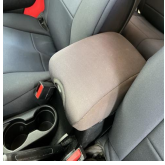


Photo 9

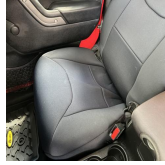


Photo 10

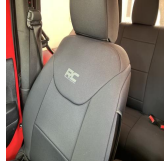


Photo 11



Photo 12



Photo 13



Photo 14

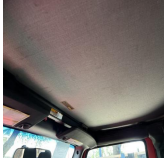


Photo 15



Photo 16



Photo 17



Photo 18

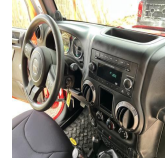


Photo 19

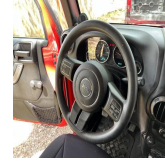


Photo 20



Photo 21

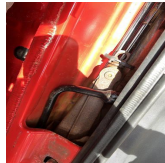


Photo 22



Photo 23



Photo 24

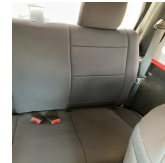


Photo 25

## Exterior Body / Structural Condition

### Paint depth on metal body panels

Small amount of paint touchup noticed on the vehicle, the front driver fender has been repainted, the hood panel has been repainted, front passenger side fender repainted, all other metal body panels are showing factory paint depth. All metal body panels are original to vehicle. There is no visual difference in the repaint work versus factory paint work on the vehicle. Normal wear present to exterior for age and mileage including chips scrapes scratches and dings. See all exterior photos for evidence of wear and tear present. Crack noticed on the plastic portion of rear bumper.



Photo 26



Photo 27



Photo 28



Photo 29

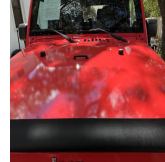


Photo 30

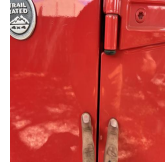


Photo 31

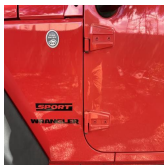


Photo 32

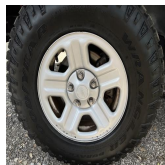


Photo 33



Photo 34



Photo 35



Photo 36



Photo 37



Photo 38

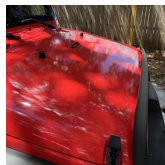


Photo 39



Photo 40

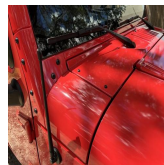


Photo 41



Photo 42

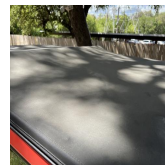


Photo 43



Photo 44

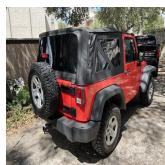


Photo 45



Photo 46



Photo 47

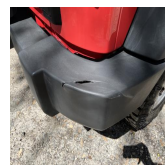


Photo 48



Photo 49

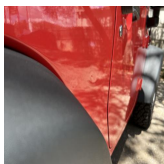


Photo 50



Photo 51



Photo 52



Photo 53

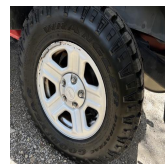


Photo 54



Photo 55

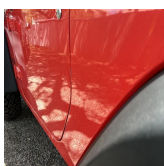


Photo 56

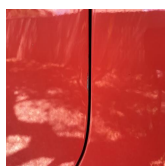


Photo 57

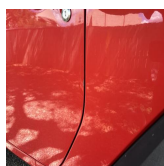


Photo 58



Photo 59



Photo 60

### Front bumper condition

Normal wear

<b>Rear bumper condition</b>	Normal wear
<b>Hood panel condition</b>	Abnormal wear
<b>Driver side fender condition</b>	Abnormal wear
<b>Passenger side fender condition</b>	Abnormal wear
<b>Roof panel condition</b>	Normal wear
<b>Front driver side door Condition</b>	Normal wear
<b>Rear driver side door condition</b>	N/A
<b>Front passenger side door condition</b>	Normal wear
<b>Rear passenger side door condition</b>	N/A
<b>Driver side quarter panel condition</b>	Normal wear
<b>Passenger side quarter panel condition</b>	Normal wear
<b>Trunk panel condition</b>	N/A
<b>Truck Bed condition</b>	N/A
<b>Tail gate condition</b>	N/A
<b>Chassis / Frame condition</b>	Normal wear
<b>Frame rail condition</b>	Normal wear
<b>Subframe condition</b>	Normal wear
<b>Engine cradle condition</b>	Normal wear
<b>Skid / Dust cover condition</b>	Normal wear
<b>Collapse beam condition</b>	Normal wear
<b>Window trim condition</b>	Normal wear
<b>Weather stripping condition</b>	Normal wear
<b>Front windshield condition</b>	Normal wear
<b>Other window glass condition</b>	Normal wear
<b>Wheel / Hubcap condition</b>	Normal wear

## **ADDITIONAL NOTES**

No rust/corrosion to frame/chassis vehicle has lived in a healthy climate for the duration of its usage

---

## Tire condition

### Front driver side tire

75-100% remaining

Tires are matching on all four corners with over 85% tread life remaining. No abnormal wear present whatsoever



Photo 61



Photo 62

### Front passenger side tire

75-100% remaining



Photo 63

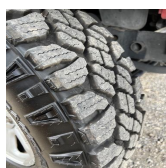


Photo 64

### Rear driver side tire

75-100% remaining



Photo 65

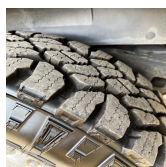


Photo 66

### Rear passenger side tire

75-100% remaining



Photo 67



Photo 68

### Spare tire and equipment

Spare and tools present



## Battery / charging system

### Battery date

No date



Photo 69

---

**Standing voltage**

12.8

---

**Loaded voltage**

14.0

---

**Engine Testing / Condition**

100%

**Internal engine inspection w/ borescope camera**

Engine clean internally, no gunk or sludge present. Proper signs of maintenance present. All external engine accessories in good working order. External drive belt in healthy condition. Coolant mixture correct and coolant system functionality healthy. No external oil leaks or seepage from anywhere on the engine, noticed previous replacement of both primary and secondary oil pan gasket. Currently no mechanical issues present in relation to the engine.

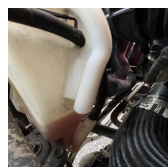


Photo 70

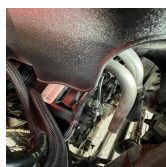


Photo 71

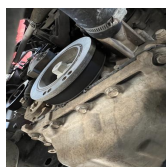


Photo 72

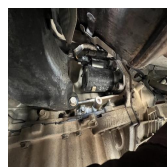


Photo 73

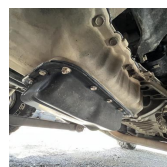


Photo 74

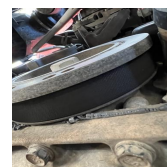


Photo 75

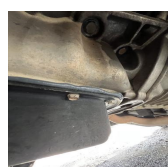


Photo 76

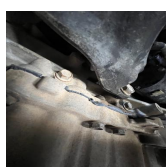


Photo 77

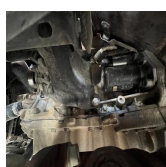


Photo 78

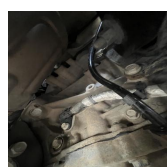


Photo 79



Photo 80

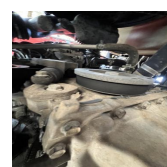


Photo 81

<b>Engine block test</b>	Pass
<b>Coolant mixture test</b>	Pass
<b>Air filter condition</b>	Normal wear
<b>Engine oil condition</b>	Normal wear
<b>Engine oil level</b>	Healthy
<b>Engine oil leaks</b>	None
<b>Coolant level</b>	Healthy
<b>Coolant hoses</b>	Healthy
<b>Radiator condition / function</b>	Healthy
<b>Engine operating temperature</b>	Healthy
<b>Cooling fan function</b>	Healthy
<b>Drive belt condition</b>	Healthy
<b>Abnormal engine knock</b>	None
<b>Abnormal valve train rattle</b>	None

<b>Abnormal bearing noises</b>	None
<b>Engine gunk / sludge</b>	None
<b>Fuel tank</b>	Healthy
<b>Fuel injectors / lines</b>	Healthy
<b>Valve cover gaskets</b>	Healthy
<b>Intake manifold gasket</b>	Healthy
<b>Cylinder head gasket</b>	Healthy
<b>Oil pan gasket</b>	Healthy
<b>Timing cover gasket</b>	Healthy
<b>Rear main seal</b>	Healthy
<b>Timing belt / components</b>	Healthy
<b>Exhaust manifold</b>	Healthy
<b>External engine accessories</b>	Healthy

**Transmission / Differentials**

**Transmission fluid level**

Healthy

**Transmission fluid condition**

Healthy

**Transmission fluid leaks**

None

No transmission fluid leak out. No fluid leak out from the center differential, front differential or rear differential casing.

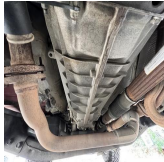


Photo 82

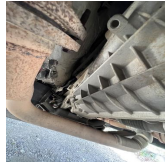


Photo 83



Photo 84



Photo 85

**Transmission cooler / lines**

Healthy

**Front differential condition**

Healthy

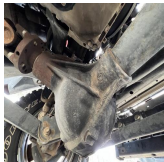


Photo 86



Photo 87

**Center differential condition**

Healthy



Photo 88



Photo 89

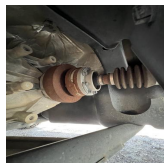


Photo 90

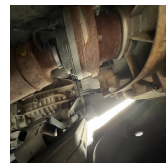


Photo 91

**Rear differential condition**

Healthy



Photo 92



Photo 93

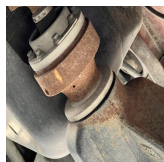


Photo 94

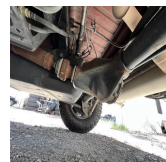


Photo 95

**Differential leaks**

None

**4x4 function / engagement**

Healthy

**Clutch engagement**

Healthy

<b>Gear engagement</b>	Healthy
<b>Shift transitions</b>	Healthy
<b>Drive shaft condition</b>	Healthy

## Suspension condition

### Front shocks / struts

Healthy

Normal wear/fatigue notice to suspension. No suspension components are blown out and do for replacement however nothing is recognized as recently replaced either. No excessive surface rust on the expose metal. All rubber in relation to mounts joints and bushings rich with texture.



Photo 96



Photo 97



Photo 98



Photo 99

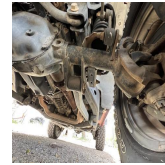


Photo 100

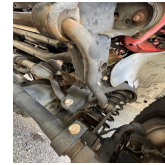


Photo 101

### Rear shocks / struts

Healthy



Photo 102

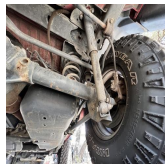


Photo 103



Photo 104

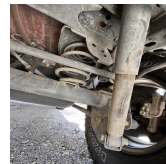


Photo 105

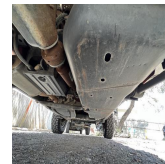


Photo 106

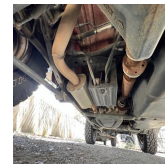


Photo 107

### Control arms upper

Healthy

### Control arms lower

Healthy

### Ball joints

Healthy

### Bushings

Healthy

### Torsion bars

Healthy

### Coilover function

N/A

### Air ride function

N/A

### Airbag condition

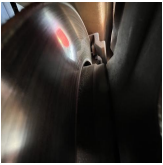

N/A

### Abnormal rust / corrosion to metals

None

### Deterioration of rubbers

None

Braking system condition	
Brake fluid condition	Healthy
Brake fluid level	Healthy
Brake fluid leaks	None
Moisture content in brake fluid	None
Brake lines	Healthy
Brake calipers front	Healthy
Brake calipers rear	Healthy
Brake drums rear	N/A
Brake rotors front	Healthy
Brake rotors rear	Healthy
Front brake pad life remaining	50-75% remaining
 <p>Photo 108</p>	
Rear brake pad life remaining	50-75% remaining
 <p>Photo 109</p>	
E-brake function	Healthy

Steering system condition	
Steering wheel	Healthy
Steering column	Healthy
Steering knuckle / shaft	Healthy
Steering box	Healthy
Rack and pinion condition	N/A
Inner tie rods	Healthy
outer tie rods	Healthy
Rack boots	Healthy
Power steering pump	Healthy
power steering lines	Healthy
Power steering leaks	None
Power steering fluid level	Healthy
Electric steering motor	N/A
Abnormal play / slack in steering	None
Steering alignment on road	Healthy



## Computer diagnostic scan

**Engine control module**

Healthy



Photo 110

**Transmission control module**

Healthy

**Anti lock brake (ABS) module**

Healthy

**SRS module**

Healthy

**hybrid control module**

N/A

**Suspension control module**

N/A

## Vehicle road test

### Vehicle road test comments / concerns

Vehicle function correct out on the road across the board, no drivability issues present whatsoever.

---

**Value of vehicle / Diminished value due to repairs or current damage**

No diminished value due to no structural damage present nor any structural damage repair work done

---

## Appendix



Photo 1



Photo 2



Photo 3



Photo 4

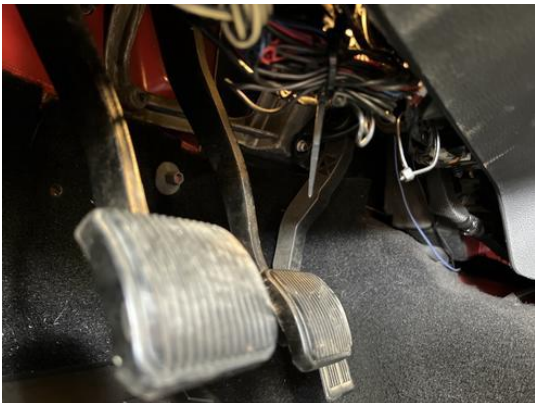


Photo 5



Photo 6



Photo 7



Photo 8



Photo 9



Photo 10



Photo 11



Photo 12



Photo 13



Photo 14



Photo 15



Photo 16



Photo 17



Photo 18



Photo 19



Photo 20



Photo 21



Photo 22



Photo 23



Photo 24



Photo 25



Photo 26





Photo 27



Photo 28



Photo 29



Photo 30



Photo 31



Photo 32



Photo 33



Photo 34



Photo 35



Photo 36



Photo 37



Photo 38



Photo 39



Photo 40

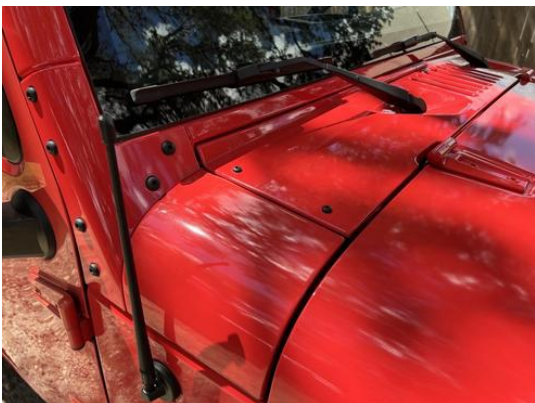


Photo 41



Photo 42



Photo 43



Photo 44



Photo 45



Photo 46



Photo 47



Photo 48



Photo 49



Photo 50



Photo 51



Photo 52



Photo 53



Photo 54



Photo 55



Photo 56



Photo 57



Photo 58



Photo 59



Photo 60



Photo 61



Photo 62



Photo 63



Photo 64



Photo 65



Photo 66



Photo 67



Photo 68



Photo 69



Photo 70



Photo 71

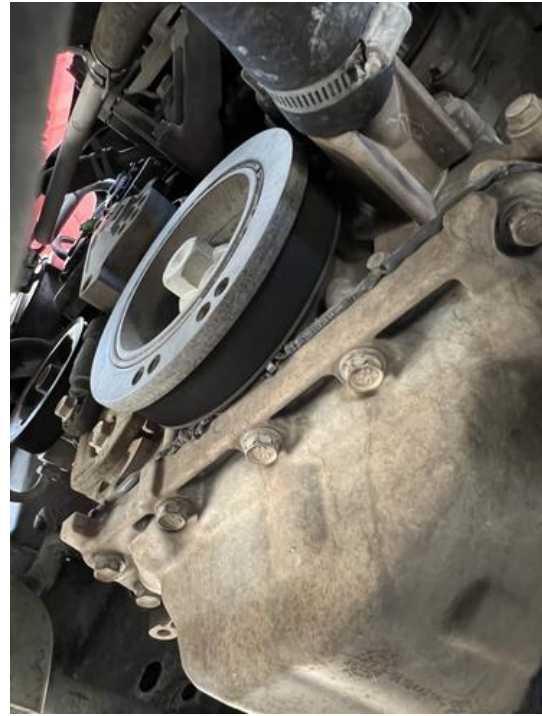


Photo 72



Photo 73



Photo 74





Photo 75



Photo 76

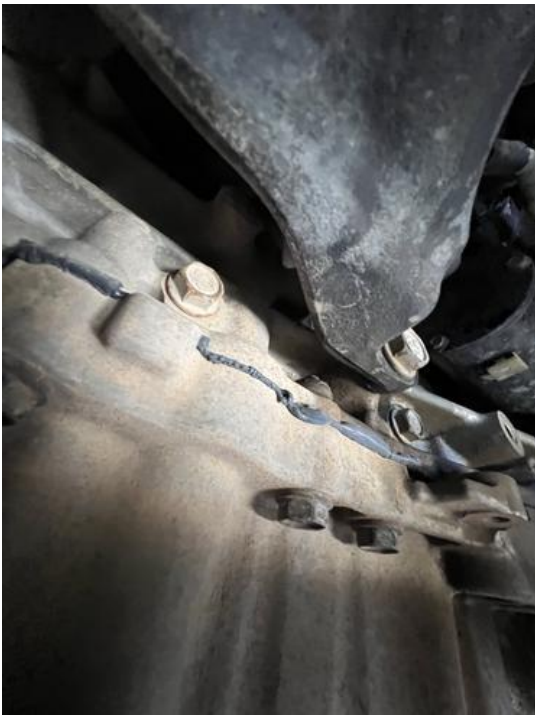


Photo 77

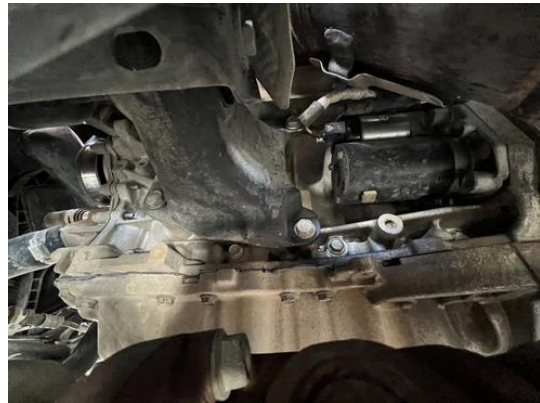


Photo 78



Photo 79



Photo 80



Photo 81



Photo 82



Photo 83



Photo 84



Photo 85



Photo 86



Photo 87



Photo 88



Photo 89



Photo 90



Photo 91



Photo 92



Photo 93



Photo 94



Photo 95



Photo 96



Photo 97



Photo 98



Photo 99



Photo 100



Photo 101



Photo 102



Photo 103



Photo 104



Photo 105



Photo 106



Photo 107

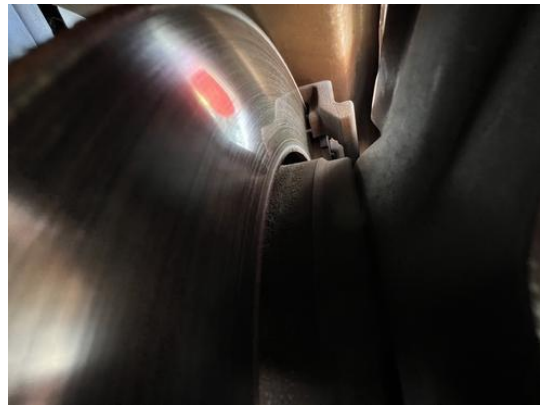


Photo 108





Photo 109



Photo 110